

Company Presentation

Welcome to Fine Techno Engineers, Ahmedabad



Index

Part 1: About Company



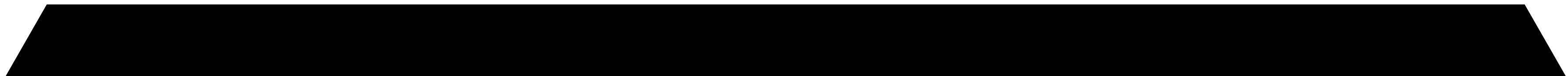
Part 2: Our Component



Part 3: Infrastructure



Part 4: Contacts



**Our company's main mission
remains the same:**

.....

**Fine Techno Engineers a professionally
managed enterprise which focuses on
innovation and entrepreneurship as key
driver to its success & growth.**

About Company

One Of The Most Leading
Manufacturing Company! We produce
positive results from ever-growing
manufacturing estates, established a
corporate mandate to maintain
strong values.

Fine techno Engineers a professionally managed enterprise which focuses on innovation and Entrepreneurship as key driver to its success & growth.

This facility is located at GIDC KathWada, Ahmedabad with world class infrastructure for Fabrication, Parts Manufacturing, Machining & Assembly.

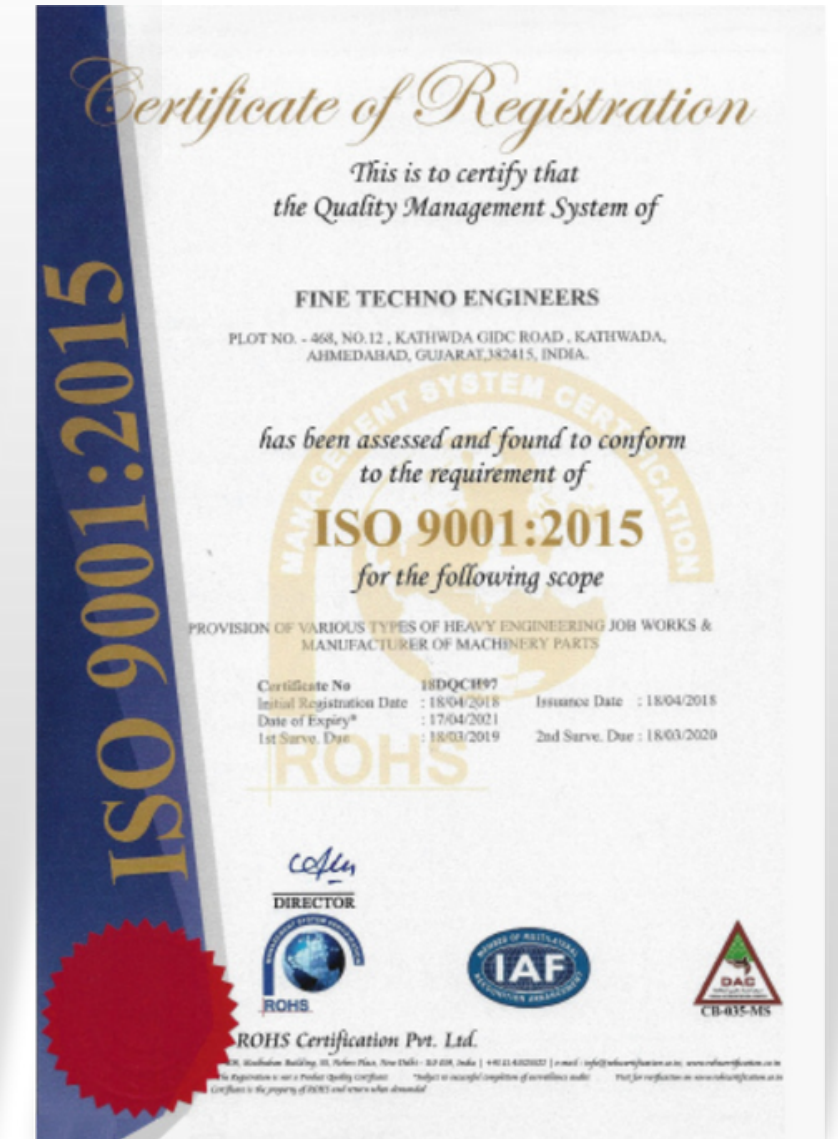
As a philosophy FTE has kept its infrastructure current to the corporate expansion needs, Gap is always found for having large size Heavy Duty machines. Even lifting capability is designed to take up large size heavy tonnage jobs.

Fine techno Engineers Core strength lies in its ability to understand and execute critical engineering tasks.

We believe that in engineering every thing is possible if significant efforts are taken in right direction with optimal usage of the available resources.



One Of The Most Leading Manufacturing Company!





Why Choose Us?

**FineTechnoEngineers is
recognized as one of the
world's leading industry &
manufacturing corporation!**

**Providing
Full Services
In Sphere Of
Mechanical
Engineering !**

**Quality
Products**

**Experienced
Engineers**

**Ontime
Delivery**



Our key company strategies for the year

- **Quality Control System**

- **100% Satisfaction Guarantee**

- **Highly Professional Staff**

- **Accurate Testing Processes**

- **Unrivalled workmanship**

- **Professional and Qualified**

- **Environmental Sensitivity**

- **Personalised Solutions**

Leadership Team



Jignesh Patel

Chief Executive Officer



Bhavin Patel

Managing Director



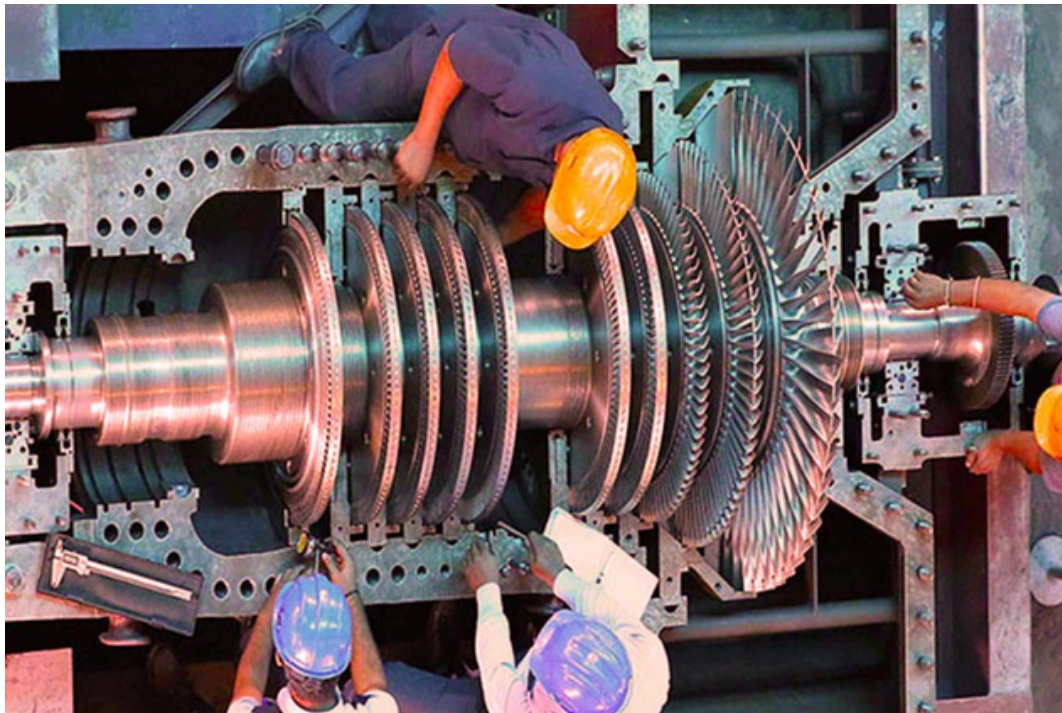


Our Component

**We work with global
industries! dedicated
customer teams & an agile
services**

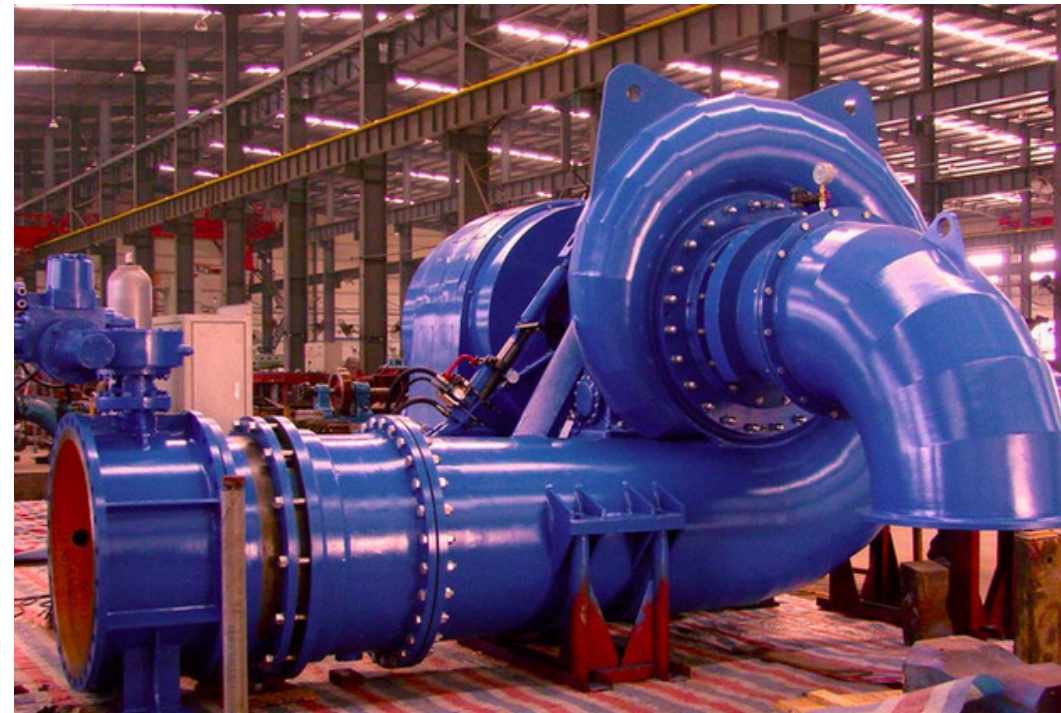
Component

FineTechnoEngineers has been building relationships and projects that last.



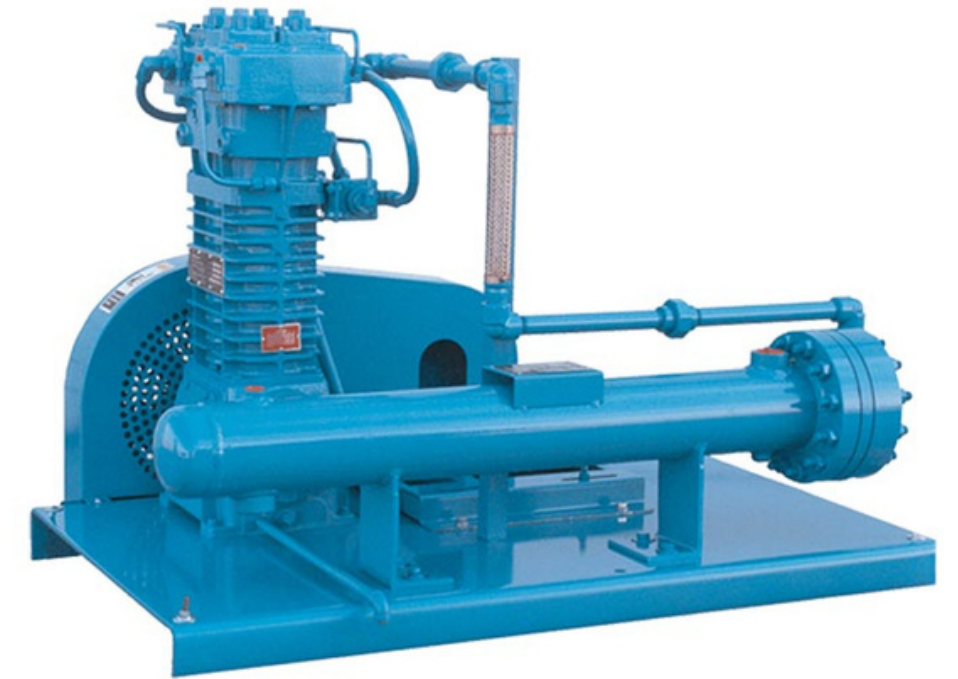
Steam Turbine

FTE with a herculean set-up of machinery, we are a diligent machining service provider for the past 20 years to Refineries



Hydro Turbine

We have the capacity to do on site jobs with our portable machines, we can re-machine, modify, repair and refurbish on areas of even limited access.



Gas Compressor

Provides service inspection methods that allow inspectors to evaluate and collect data about a material, system, or component without permanently altering it.



Air Compressor

FTE with a herculean set-up of machinery, we are a diligent machining service provider for the past 20 years to Refineries.



Textile Machinery

we have the capacity to do on site jobs with our portable machines, we can re-machine, modify, repair and refurbish on areas of even limited access.



Oil & Gas Parts

Provides service inspection methods that allow inspectors to evaluate and collect data about a material, system, or component without permanently altering it.

Infrastructure

.....

**Quality makes product perfect by
experienced Workers**

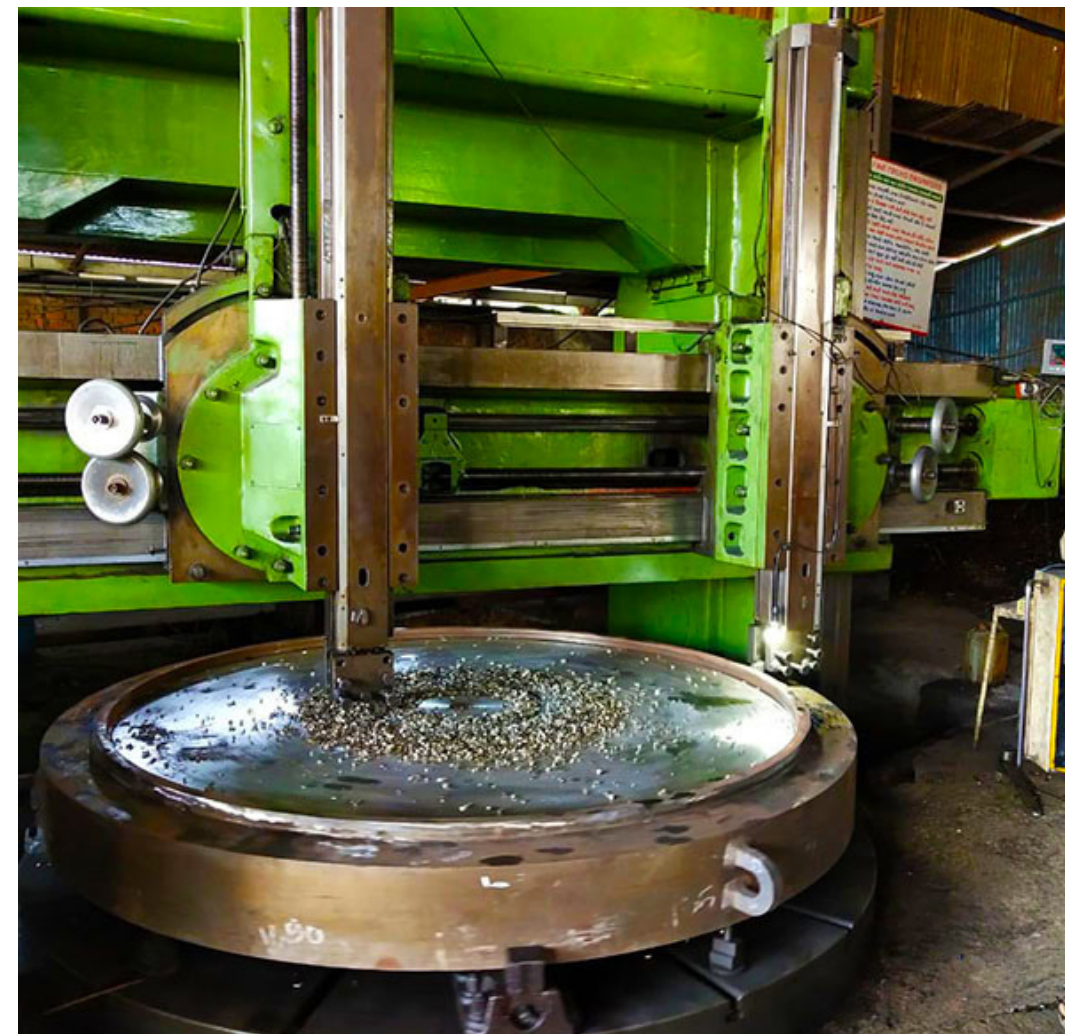
**Provides High Performance Services And Product For Multiple Industries &
Technologies!**

Infrastructure

Quality makes product perfect by experienced Workers



Heavy Lathe



Vertical Turret Lathe



Vertical Turret Lathes



Vertical Turret Lathe



EOT Crane

Our Key Clients

We work to get the best for our clients



Facilities	Specification
VTL Machine (WMW GERMANY) WITH DRO	Chuck dia 3520 mm Swing dia 4000 mm (weigh capacity- 35 ton)
VTL Machine (WMW GERMANY) WITH DRO	Chuck dia 3520 mm Swing dia 4000 mm (weigh capacity- 35 ton)
VTL MACHINE (STENCO – RUSSIA) WITH DRO	Chuck dia 2800 mm Swing dia 3200 mm
HORIZONTAL BORING MACHINE	125/1, TABLE SIZE: 1900 X 1600 MM VERTICAL: 1800 MM

Facilities	Specification
VTL MACHINE (TOS) (SK-16)	CHUCK DIA – 1600 MM SWING DIA – 1800 MM
Universal Drill Machine	Up to 50mm drill dia
Lathe Machine	42” CENTRE 40 FT LENTH
Lathe Machine	30” CENTER 28 FT
Lathe Machine	8” CENTER 12 FT
EOT Crane	25 T

Quick Contact

Complete control over products
allows us to ensure our customers
receive the best quality prices and
service.

Email:

info@finetechnoengineers.com

Address:

**Plot No. 468, Rd Number 12,
Kathwada GIDC, Odhav
Industrial Estate, Odhav,
Ahmedabad, Gujarat 382430**

Phone:

+91 7405074055, +91 9722572822

Hours:

Mon-sat: 8am – 7pm